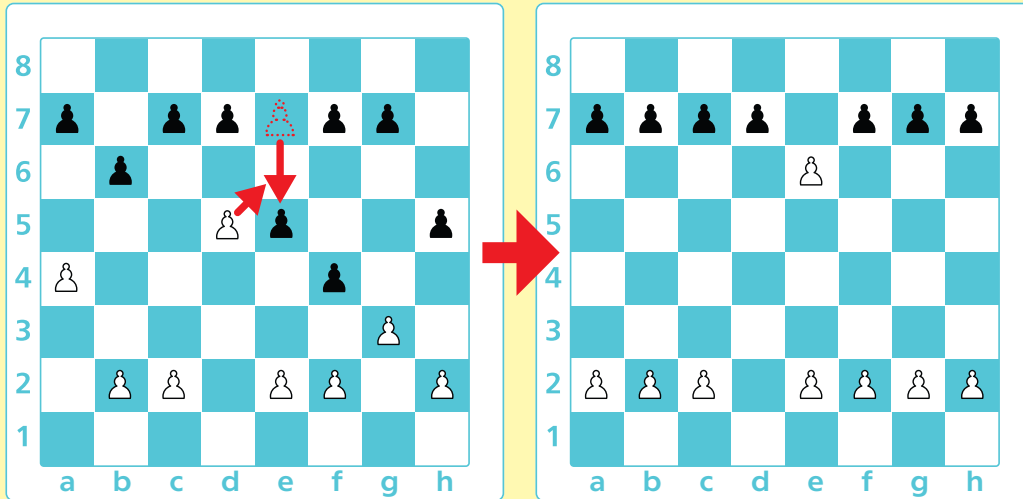


En Passant: Tricky Pawn Capture

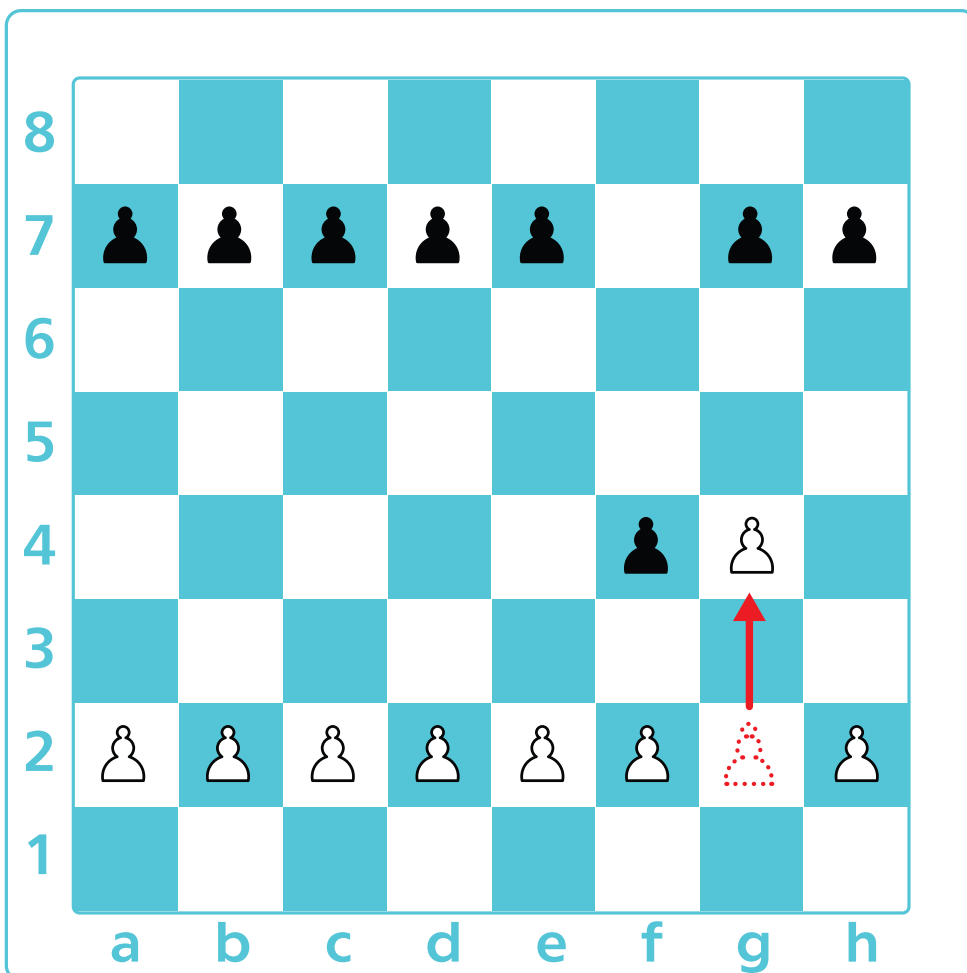
When a pawn moves two squares from its **INITIAL** position and passes a **SQUARE CONTROLLED BY AN ENEMY PAWN**, the enemy pawn can capture it. The pawn gets captured as if it had only moved **ONE SQUARE**. This move is called "en passant" which means "in passing".



You can catch a pawn en passant **IN YOUR NEXT MOVE ONLY**, not later!



The black pawn is going to capture the white pawn en passant. On which square will it land after the capture? Check the correct answer.



f3

g3

g2

f2

g4