

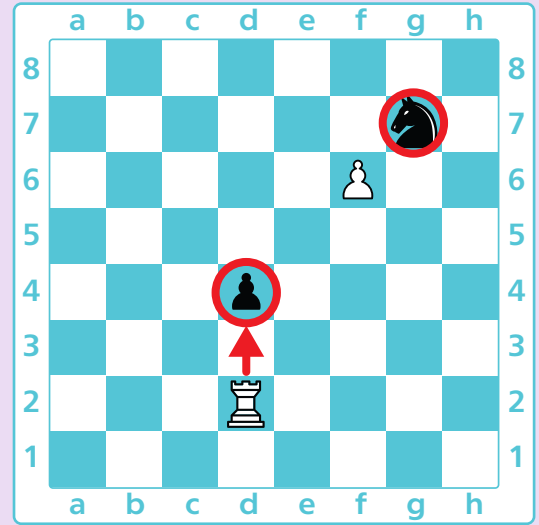
Short NOTATION OF CAPTURES

To make a short notation of a capture write the name of the piece, put a cross and write the name of the square on which the piece captures.

Rxd4 means that a rook moved to square d4 and made a capture.

If a pawn makes a capture, write down the letter of its starting file too.

fxg7 means that a pawn from file f moved to g7 and made a capture.



Check all the correct notations of the captures shown on the board below.

Nxf3

Pc-b5

cxb5

Qxe5

Q-e5

Kxb2

Kab2

Nf3

