

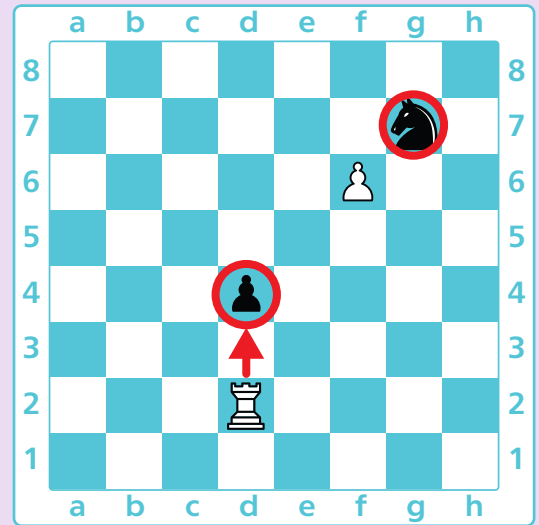
Writing it Down: NOTATION OF CAPTURES

To write down a capture, write the short name of the piece that captures, its start square and the square on which it captures and put an "X" between the names of squares.

Rd2xd4 means "a rook moved from d2 to d4 and made a capture"

You don't need to write the short name for a pawn.

f6xg7 means "a pawn moved from f6 to g7 and made a capture"

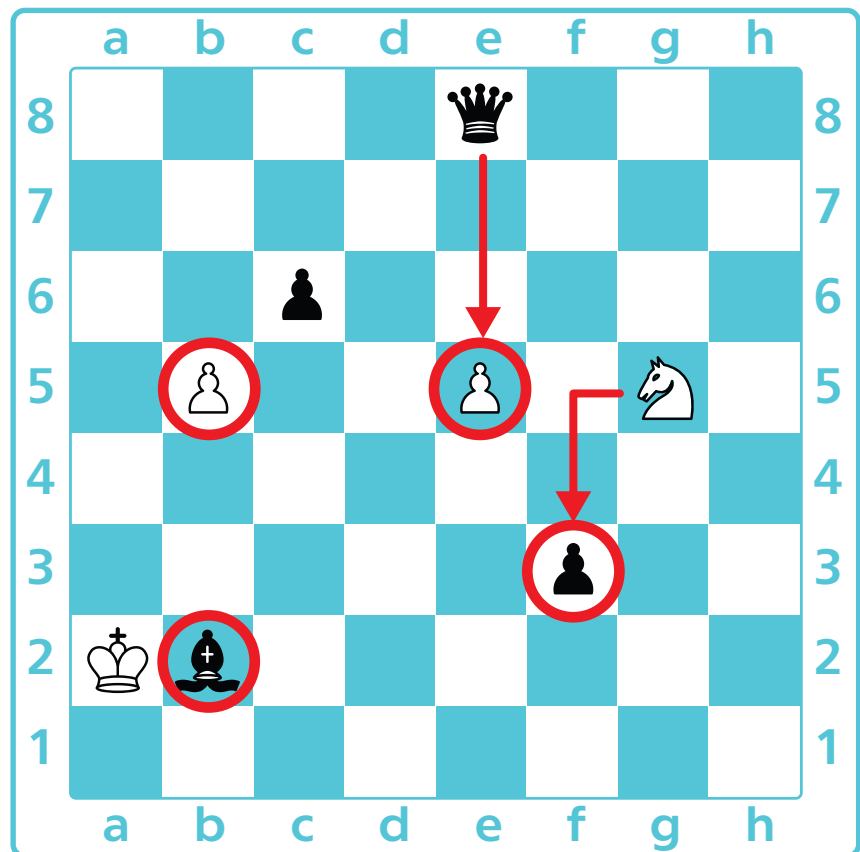


Check all the correct notations of the captures shown on the board below.

Ng5xf3

Pb5xc6

c6xb5



Qe8xe5

Qe8-b5

Ka1-b1



Ka2xb2

f5-f3