

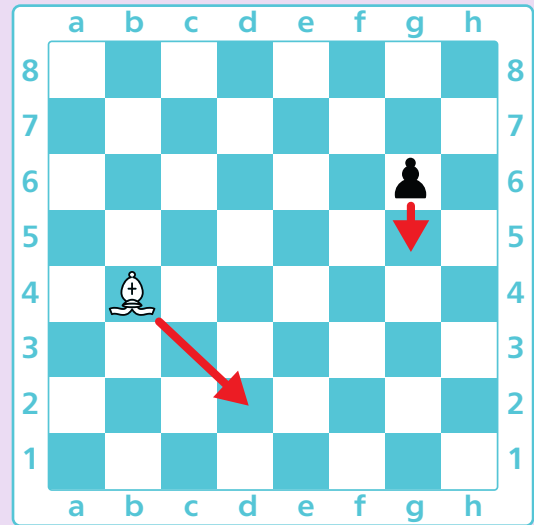
Writing it Down: NOTATION OF MOVES

To write down a move, write the short name of the piece, the start and end squares of the move and put “-” between the names of squares.

Bb4-d2 means “a bishop moved from square b4 to square d2”

You don't need to write the short name for a pawn.

g6-g5 means “a pawn moved from square g6 to square g5”



Draw straight lines on the board below to show the following moves:

Ra7-d7
Qh7-c2
Nb4-a2
g2-g4

