

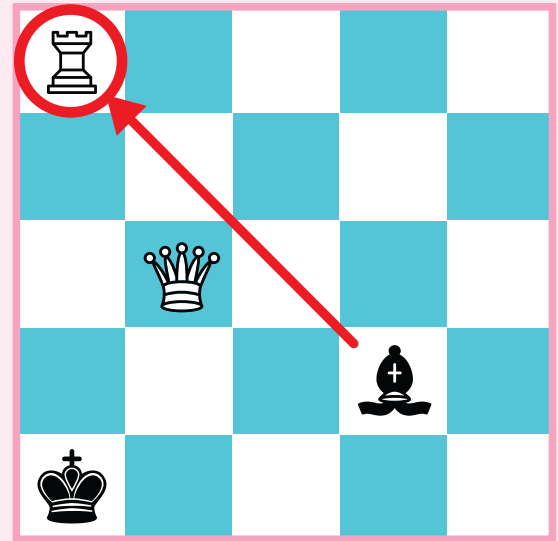
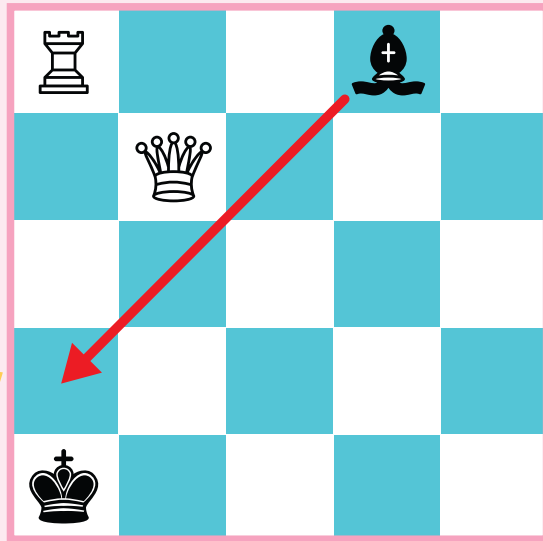
Getting out of Check:

PROTECTION AND CAPTURE

If your king is in check, you must save it right away.

PROTECTION means putting another piece in the attack line of the checking piece.

CAPTURE means taking the checking piece.



Draw a line to show how the king can be **PROTECTED**.

Draw a line to show how the checking piece can be **CAPTURED**.

