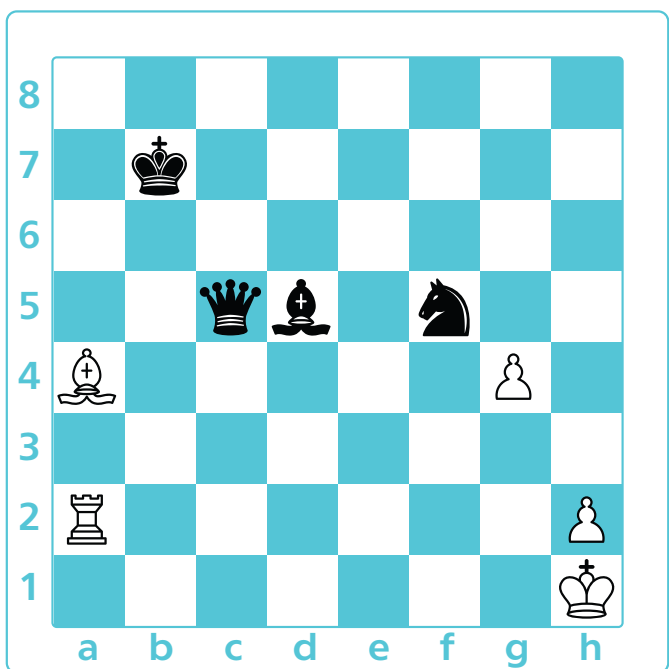
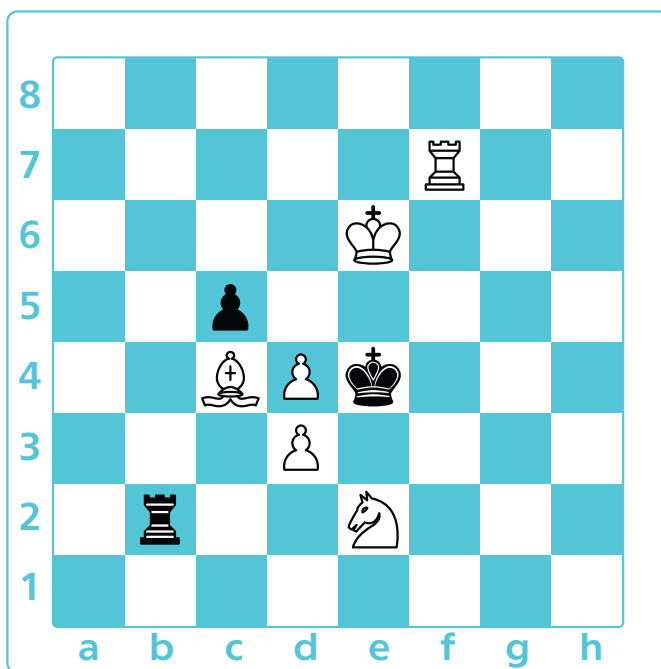


Run, Protect or Capture

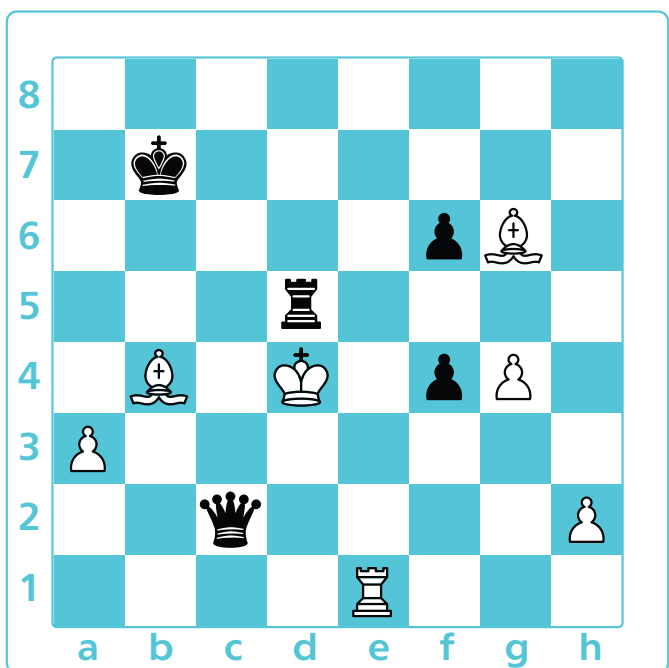
For each board mark the notation of the move that will save the king from check.



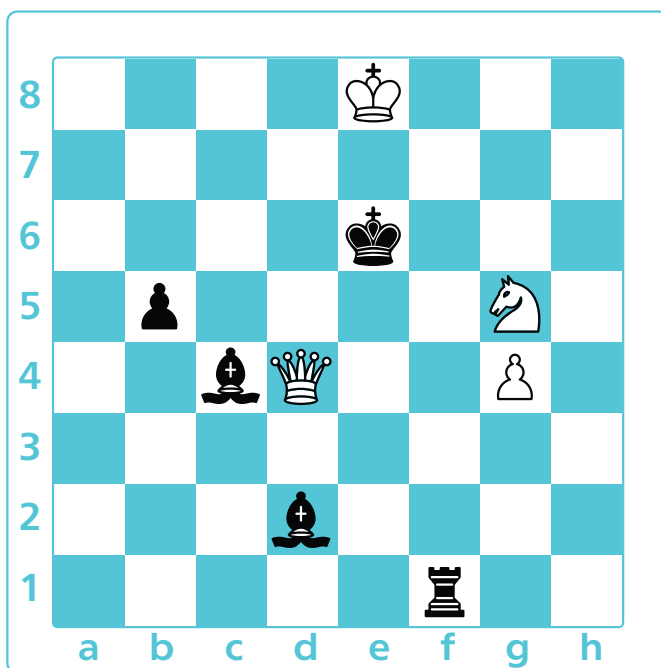
Bc6 **Kg1** **Rg2** **gxf5**



Ke3 **Kxd4** **Rxe2** **Ke5**



Re5 **Ke3** **Bxc2** **Kxd5**



Kf5 **Rf5** **Bxg5** **Rf6**