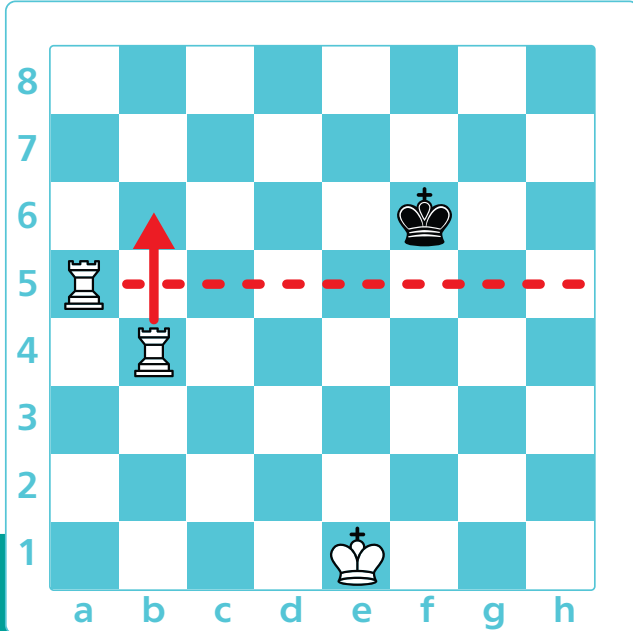
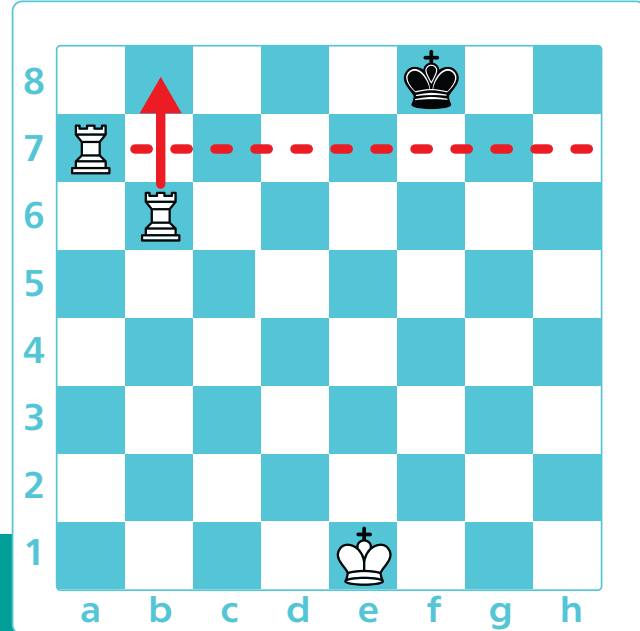


Two Rook Mate Strategy

You can checkmate the enemy king with **two rooks**. First **cut the king off** to an edge of the board: **check** it with one rook and **guard** with the other.



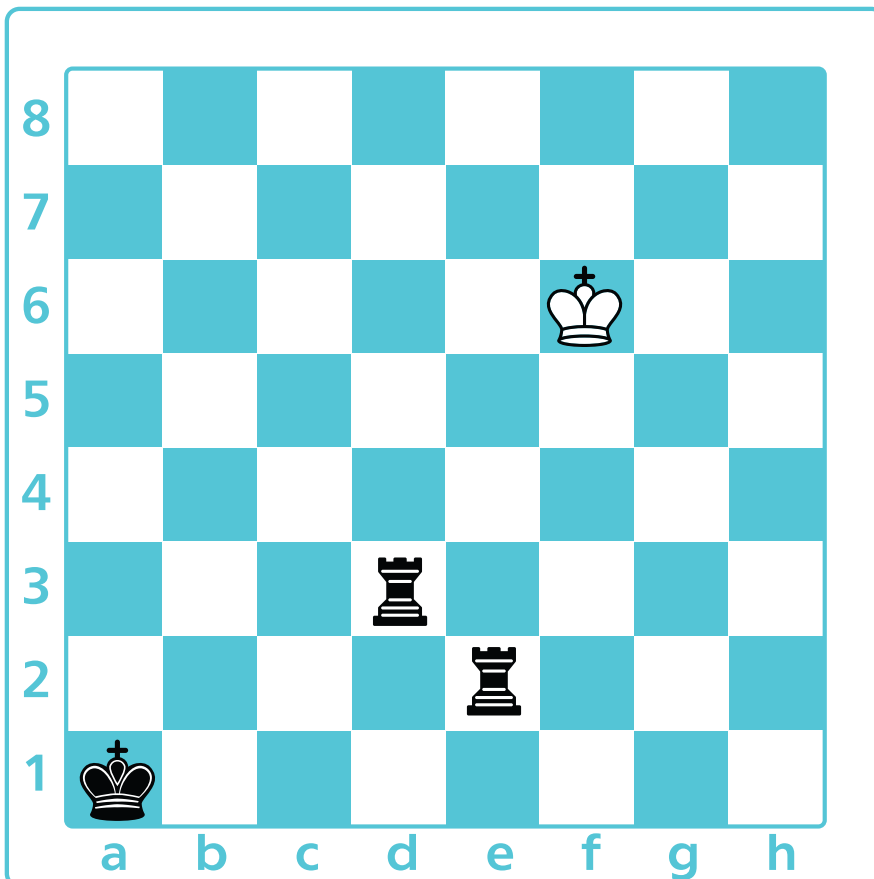
Cut the king off!



Checkmate!



The black rooks are cutting the white king off to the right edge of the board. Which move should the black make next? Mark the correct answer.



Re2-f2+

Re2-g2+

Rd3-f3+

Rd3-d6+