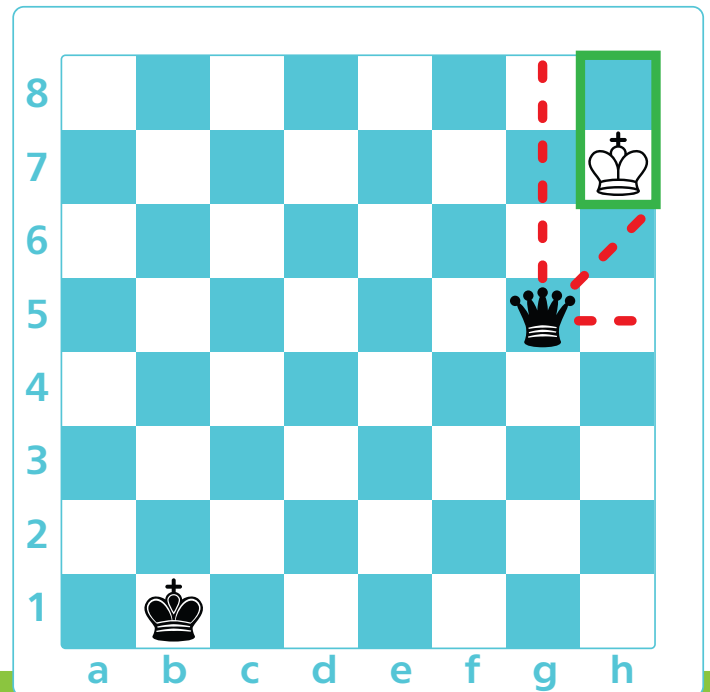
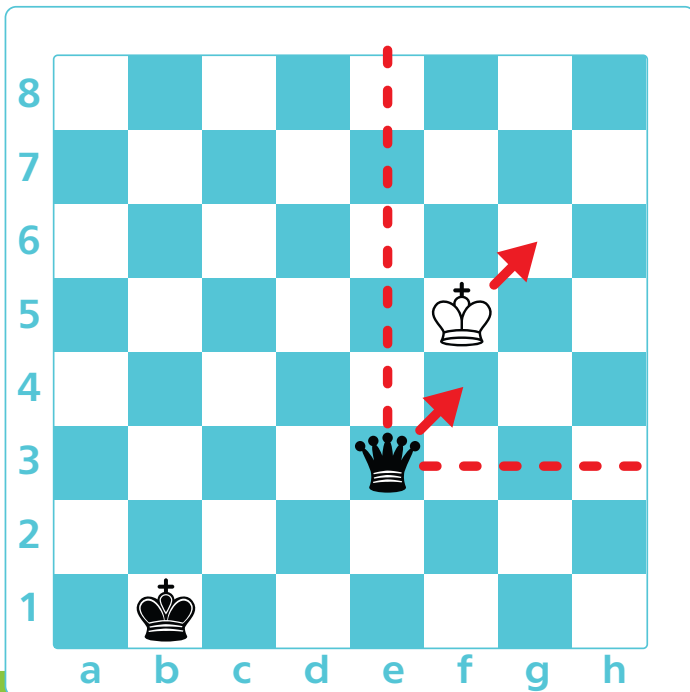


# King and Queen Mate Strategy

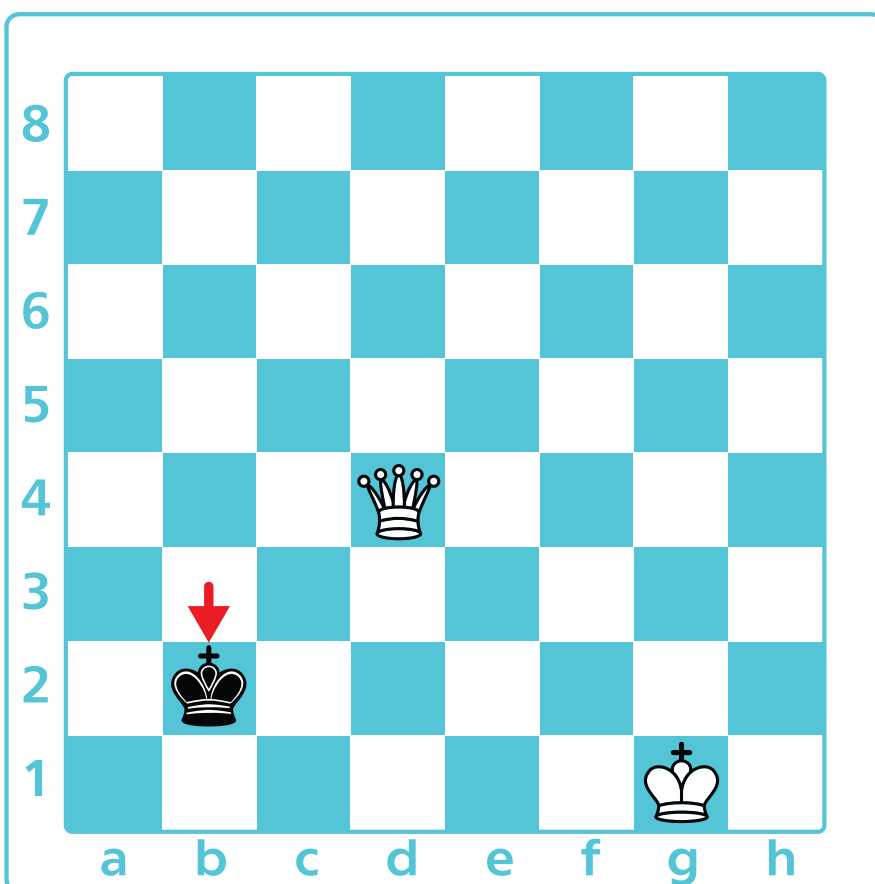
## Part 1: Put the King in a Box

You can checkmate the enemy king with **just a king and a queen**.



**1.** Put your queen a knight's move away from the enemy king and copy its every move!

**2.** Force the enemy king to a two-square "box" at an edge of the board.



The white queen is forcing the black king to an edge of the board. The black king has just moved b3-b2. What is the queen's next move?



Qd3



Qc3+



Qc4



Qd2+