



Exploring Clouds: Mid-Altitude Clouds



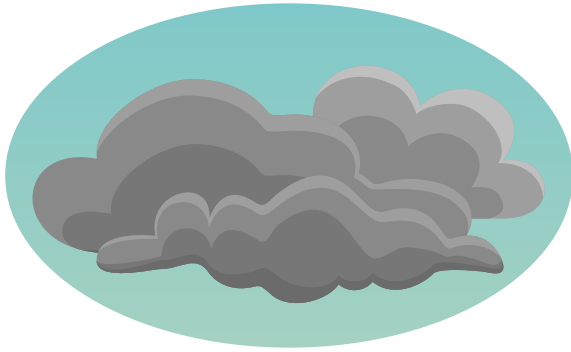
Read about mid-altitude clouds. Then, look at the pictures and check the correct types of clouds.



Altostratus – white or gray patches.

Altostratus – thin, gray, sheetlike.

Nimbostratus – thick, dark, bring rain or snow.



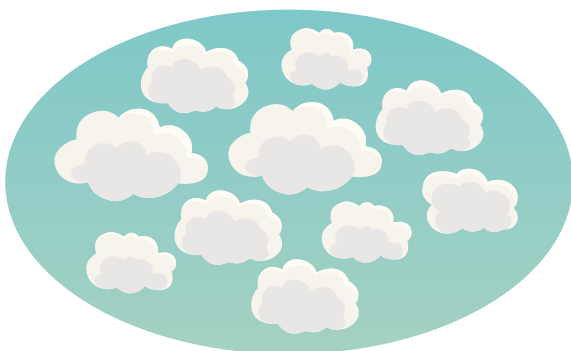
Nimbostratus
clouds

Altostratus
clouds



Altostratus
clouds

Altostratus
clouds



Altostratus
clouds

Altostratus
clouds