

Counting Birds

If we add **two equal** numbers,
the sum will always be an **even** number.

 $2+2=4$

 $3+3=6$

Count the birds in each picture and underline the matching number sentence. Is the total number of birds **odd** or **even**? Check the correct box.

$4+4$

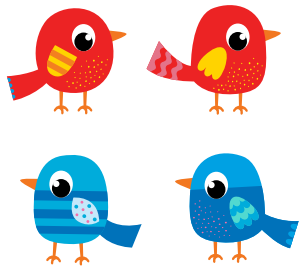
$2+2$

$2+3$

$3+3$

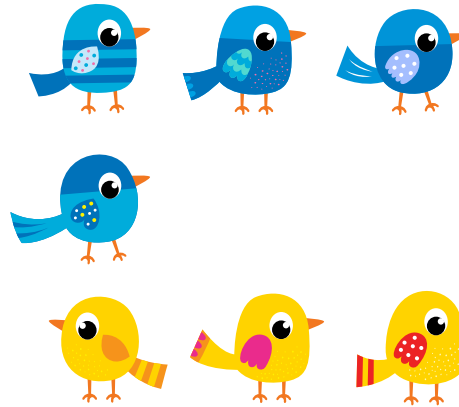
$4+3$

$4+4$



odd

even



odd

even

$5+4$

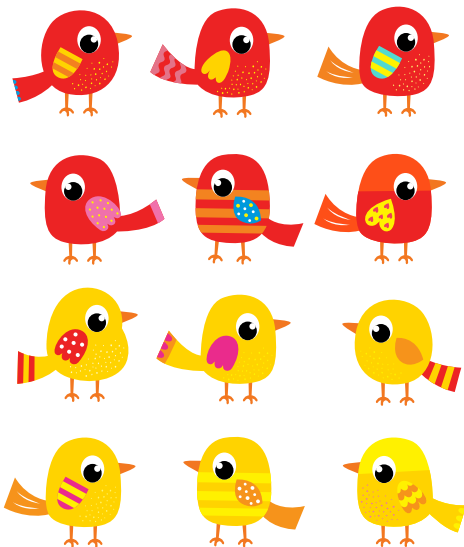
$6+5$

$6+6$

$7+8$

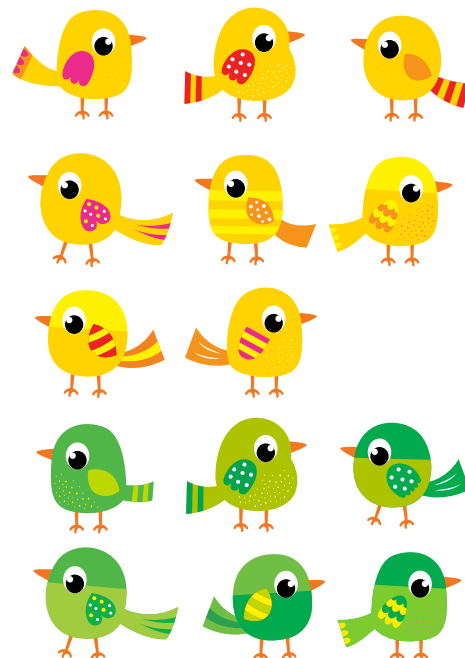
$7+7$

$8+9$



odd

even



odd

even