



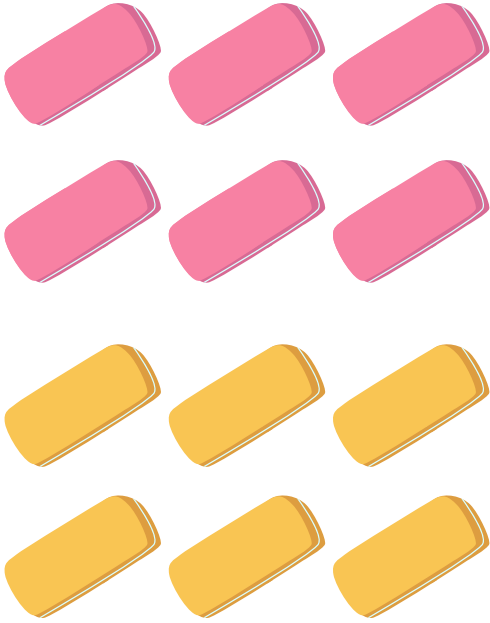
Equal Groups: Assessment 1

Count the school supplies in each picture and underline the matching number sentence. Then check if the total number is odd or even.

$6 + 6$

$6 + 7$

$12 + 12$



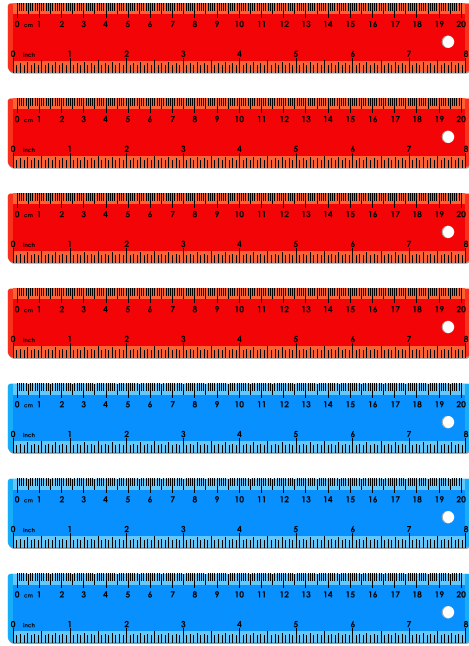
odd

even

$3 + 3$

$4 + 3$

$4 + 4$



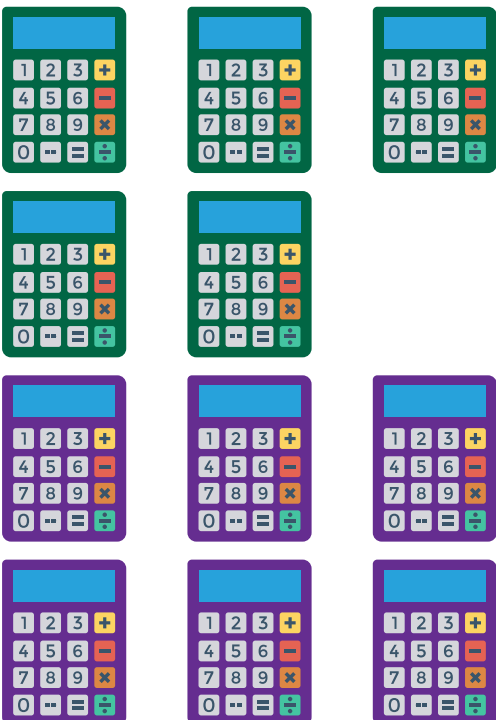
odd

even

$5 + 5$

$5 + 6$

$6 + 6$



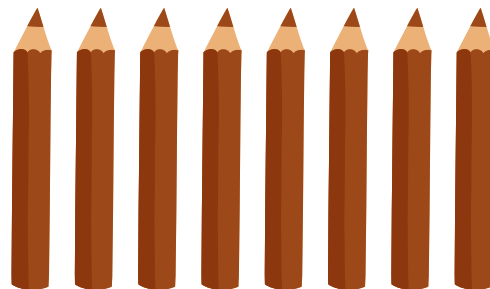
odd

even

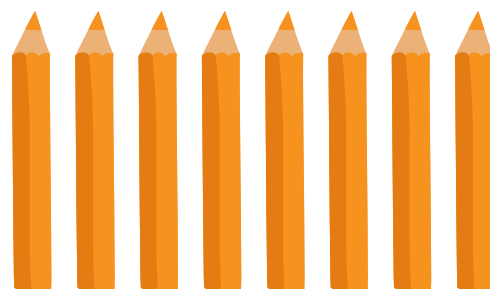
$7 + 7$

$7 + 8$

$8 + 8$



odd



even