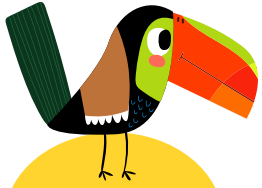
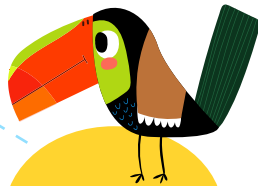


# Birds of a Feather: Commutative Property

Look at the equations near each bird. Draw a line to connect the equations that match.



$7 \times 1$



$7 + 1$



$1 \times 7$



$5 \times 4$



$10 \times 2$



$2 \times 10$



$5 \times 8$



$6 \times 8$



$6 \times 6$



$8 \times 9$



$8 \times 5$



$4 \times 6$



$6 \times 4$



$7 \times 8$