



Robin Hood Maze:



Prepositions

Prepositions are words that help explain where things are in time or space.

We sat **before** the fire.

Help Robin Hood's arrow hit the target. The path of the arrow must go through all the prepositions. Trace the path of the arrow.



in



below



old

on

through

above

down

red



chose

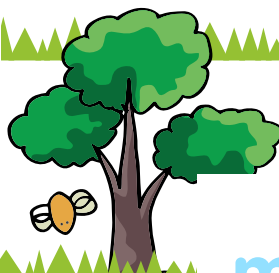


at

went

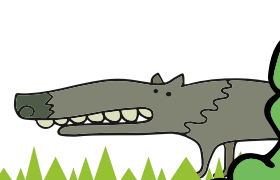
one

after



with

make



wood

into

ok

around

under

