

# Closed Syllables

In a **closed syllable**, the vowel is followed by a consonant like in the word **pen/cil**. In closed syllables, the vowel is always **short**.

Say each word out loud. If you hear a short vowel in the first syllable, divide the word after the consonant.

**den/tist**

Circle all of the words that can be divided in the second syllable after a consonant.

**tennis**



**tiger**



**tiny**



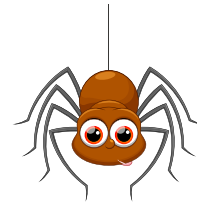
**trumpet**

**rocket**



**invent**

**Spider**



**cozy**



**ostrich**



**picnic**

**pencil**



**frozen**



**pilot**