

≡ Antonym Mix-Up ≡

Antonyms are words with the **opposite** meaning.
Open and **close** are antonyms.

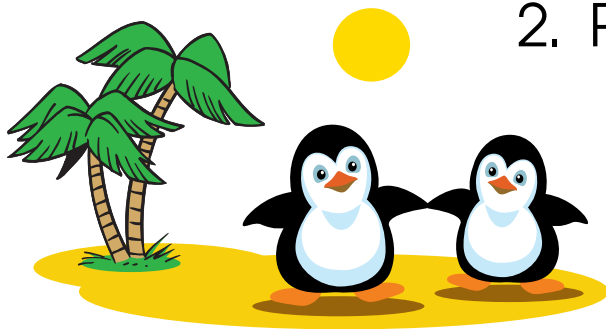
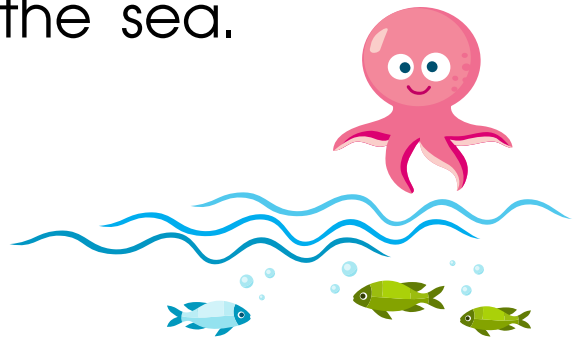
Correct the sentences below by replacing each highlighted word with its antonym.

1. The octopus lives **above** the sea.

near

under

on



2. Penguins live in a **hot** climate.

warm

tropical

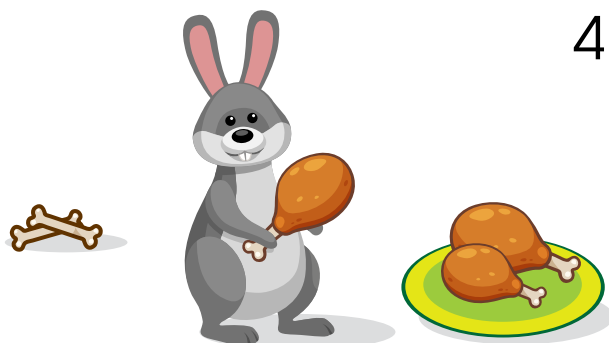
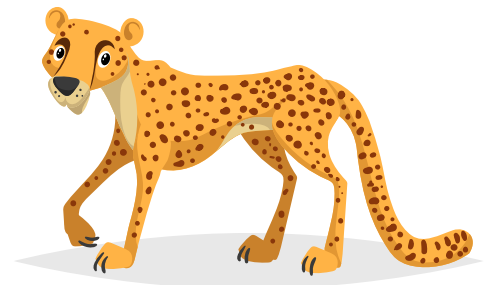
cold

3. The cheetah is very **slow**.

fast

big

dangerous



4. Rabbits **always** eat meat.

often

usually

never