

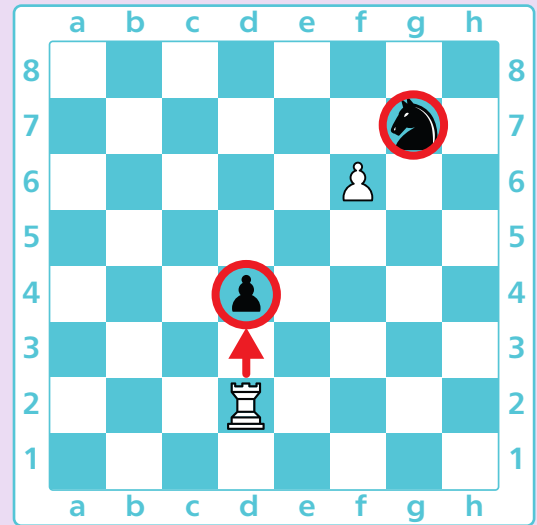
Short NOTATION OF CAPTURES

To make a short notation of a capture write the name of the piece, put a cross and write the name of the square on which the piece captures.

Rxd4 means that a rook moved to square d4 and made a capture.

If a pawn makes a capture, write down the letter of its starting file too.

fxg7 means that a pawn from file f moved to g7 and made a capture.



Check all the correct notations of the captures shown on the board below.

☐

Nxf3

☐

Pc-b5

☐

cx b5

☐

Qxe5

☐

Q-e5

☐

Kxb2

☐

Kab2

☐

Nf3

