

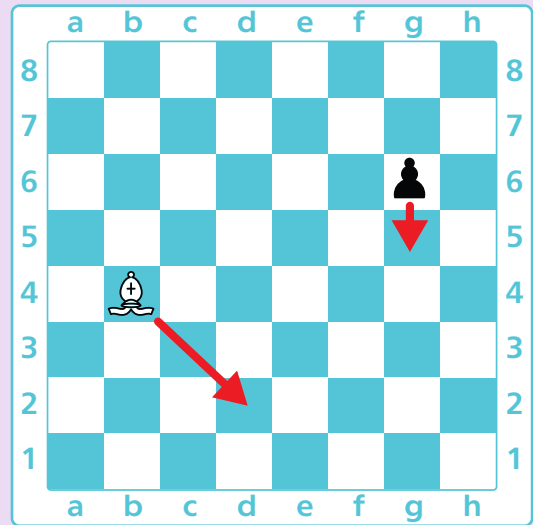
# Short NOTATION OF MOVES

To make a short notation of a move write the name of the piece and the square it moved to.

**Bd2** means that a bishop moved to square d2.

You don't need to write the short name for a pawn.

**g5** means that a pawn moved to square g5.



Draw straight lines on the board below to show the following moves:

**Re8**  
**Qe4**  
**c4**  
**g6**

