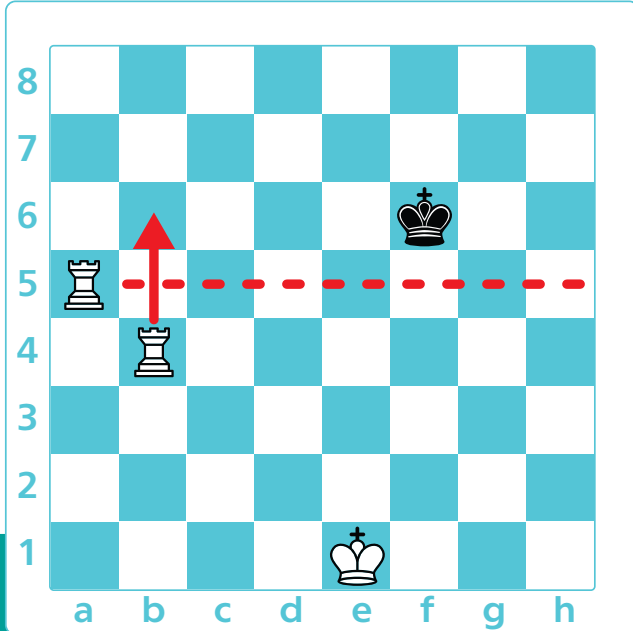
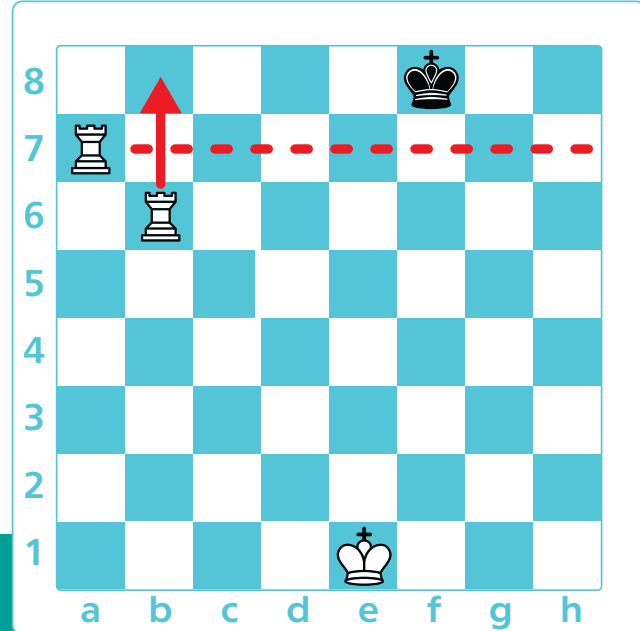


# Two Rook Mate Strategy

You can checkmate the enemy king with **two rooks**. First **cut the king off** to an edge of the board: **check** it with one rook and **guard** with the other.



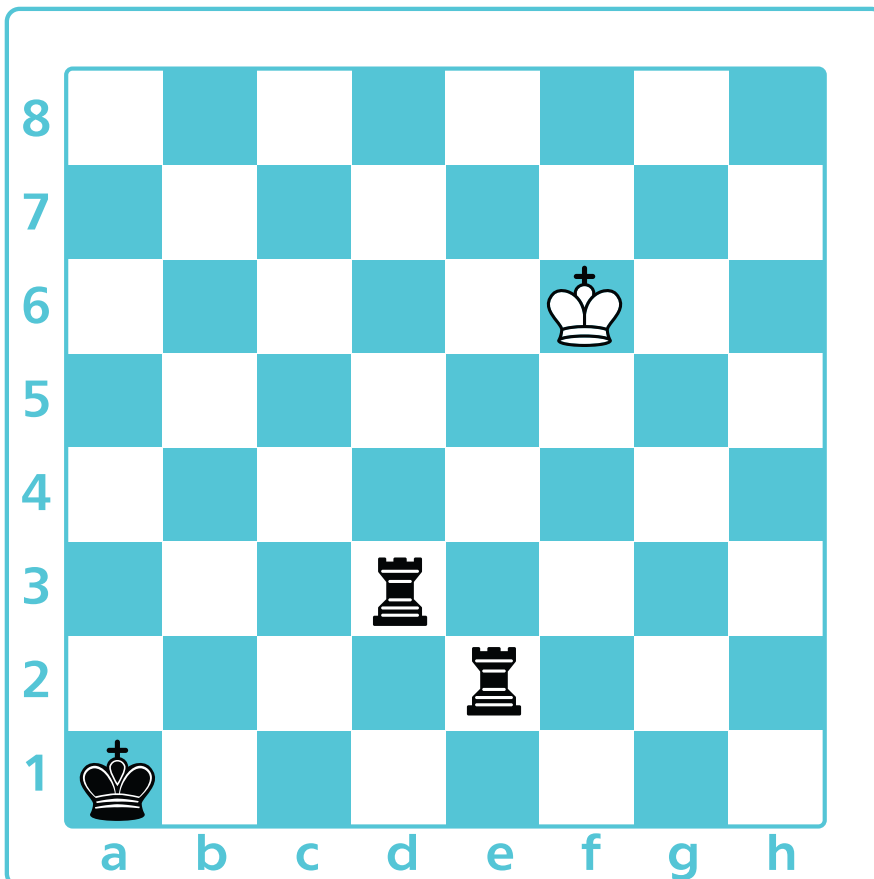
**Cut the king off!**



**Checkmate!**



The black rooks are cutting the white king off to the right edge of the board. Which move should the black make next? Mark the correct answer.




Re2-f2+

Re2-g2+

Rd3-f3+

Rd3-d6+