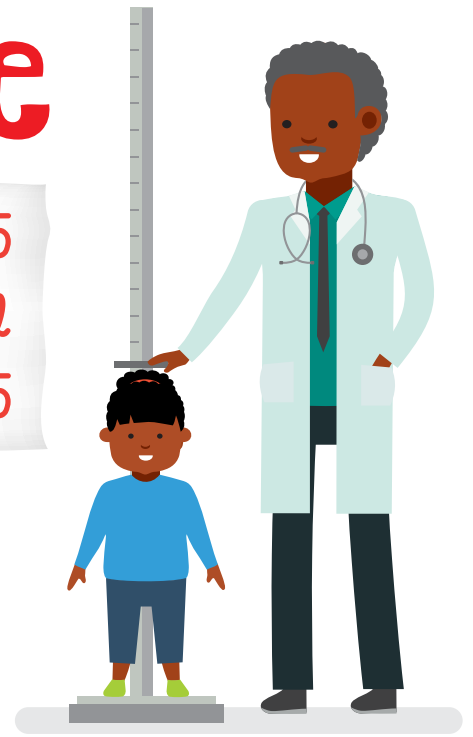


Students Line Plot

51, 54, 52, 53, 54, 55
56, 51, 53, 55, 54, 52
52, 56, 51, 53, 52, 55



A class with 18 students had their heights taken in inches. Look at the line plots and check the plot that shows the data correctly.

Student Measurements


☐

Student Measurements


☐

Student Measurements


☐