

Time Practice

Amy and Steve are friends.
Look at the pictures. The clocks
below show what time they did
different things during the day.
Check the correct answers.



Who woke up first?



7:35 a.m.



7:45 a.m.

Who came home first?

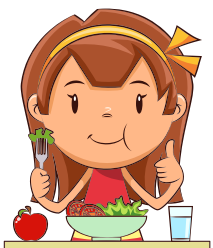


3:15 p.m.



3:55 p.m.

Who had dinner first?



7:05 p.m.



6:45 p.m.