

# Antonym Mix-Up

**Antonyms** are words with the **opposite** meaning.  
**Open** and **close** are antonyms.

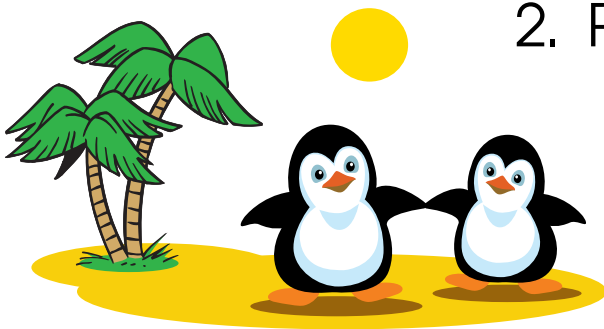
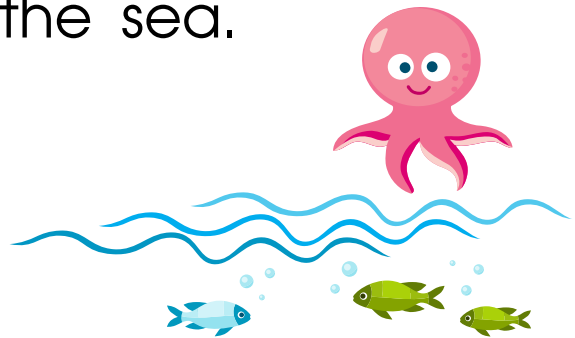
Correct the sentences below by replacing each highlighted word with its antonym.

1. The octopus lives **above** the sea.

**near**

**under**

**on**



2. Penguins live in a **hot** climate.

**warm**

**tropical**

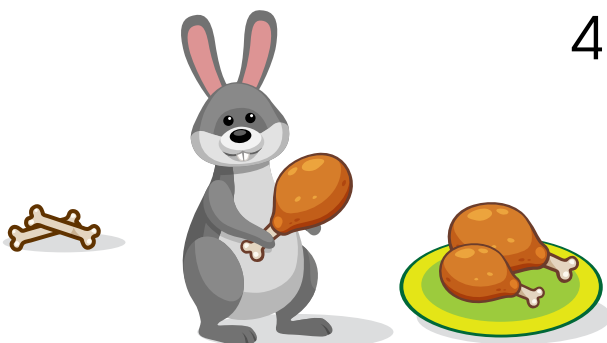
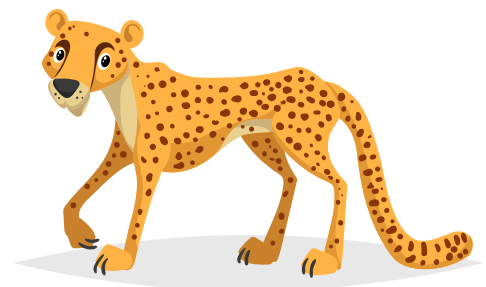
**cold**

3. The cheetah is very **slow**.

**fast**

**big**

**dangerous**



4. Rabbits **always** eat meat.

**often**

**usually**

**never**