

Closed Syllables

In a closed syllable, the vowel is followed by a consonant like in the word pen/cil. In closed syllables, the vowel is always short.

Say each word out loud. If you hear a short vowel in the first syllable, divide the word after the consonant.

den/tist

Circle all of the words that can be divided in the second syllable after a consonant.

tennis



tiger



tiny



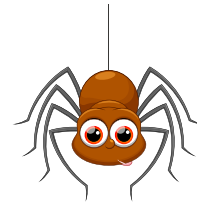
trumpet

rocket



invent

spider



cozy



ostrich



picnic

pencil



frozen



pilot