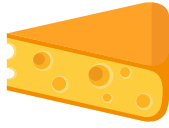


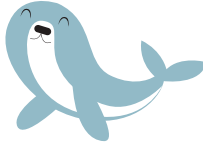
Long E vs Short E

Words with Long Vowel Sounds

Look out for "ee"
words like **cheese**.



Also look out for "ea"
words like **seal**.



Words with Short Vowel Sounds

Look out for short words that
only have 1 vowel (e) like
dress.



Say the name of the word aloud. Really sound out each letter. Really slow down on the vowel sound. Do you hear the vowel saying its own name? If you do, it's a long vowel sound. If you don't hear the vowel say its name it's a short vowel.

Trace the lines to put each word in the right category.

Long
E

← ----- deer ----- →



← ----- bell ----- →



← ----- desk ----- →



← ----- sheep ----- →



← ----- peas ----- →



← ----- meat ----- →



← ----- pencil ----- →



Short
E