

Open Syllables

In an open syllable, a vowel is at the end of the syllable like in the word ho/tel. In open syllables, the vowel is always long (says its name).

Say each word out loud. If you hear a long vowel in the first syllable, divide the word before the consonant in the second syllable.

ba/by

Circle all of the words that can be divided in the second syllable after a consonant.

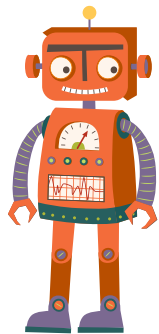
baSic



Kitten



silent



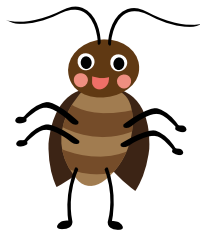
robot

able

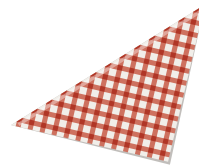
music



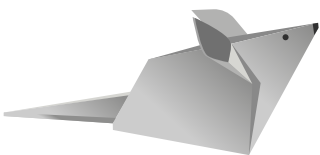
even



inSect



napKin



paper

Sudden



cactus



happen



student